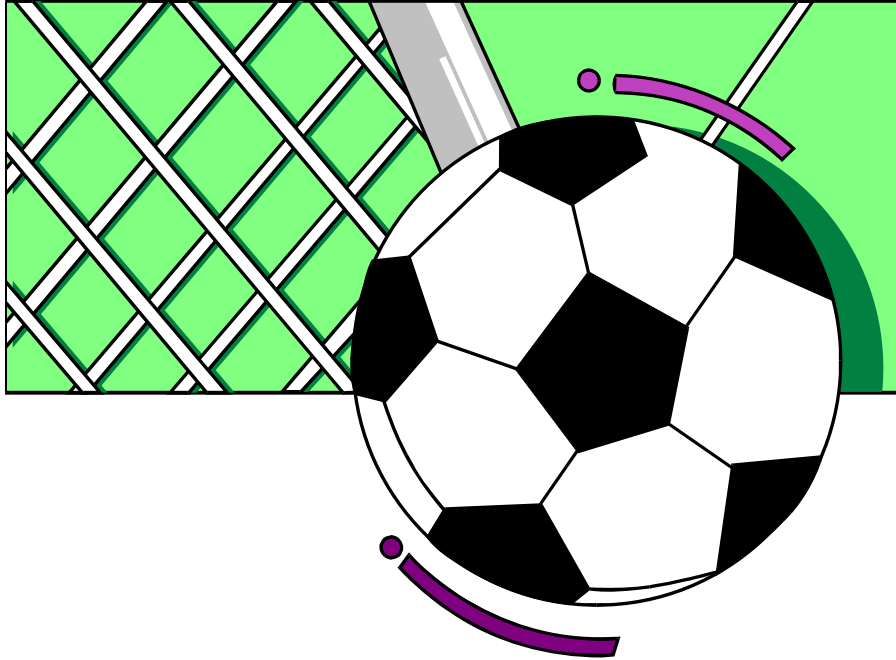


TULSA UNITED SOCCER CLUB

Guidelines and Information



TULSA UNITED SOCCER CLUB

9726 E. 42 ST. SUITE 147 TULSA OK 74146

PHONE: 665-2870 FAX: 665-2859

tusc@tulsaunitedsoccerclub.com

www.tulsaunitedsoccerclub.com

Office Hours: Tuesday, Wednesday & Thursday Afternoons

Hours may vary. Call ahead first.

GREEN COUNTRY SOCCER ASSOCIATION

9410-B E. 51ST ST TULSA OK 74146

PHONE: 481-3322 www.gcsoccer.com FAX: 481-3245

Office Hours: Monday - Friday 9:00 AM - 3:00 PM

OKLAHOMA SOCCER ASSOCIATION

9410-B E. 51ST ST TULSA OK 74146

PHONE: 627-2663 www.oksoccer.com FAX: 627-2693

Office Hours: Monday - Friday

9:00 AM - 5:00 PM

TULSA UNITED EXECUTIVE BOARD 2011 - 2012

Chairman (Past President)	Kurt Minnich ksminnich@yahoo.com	296-7432
President	Mike Hazel Mike.hazel@cox.net	252-2628
1 st Vice President (Games & Discipline)	Dan Hicks danhicksw@hotmail.com	828-9653
2 nd Vice President (Fields & Equipment)	Al Beall albeall@cox.net	449-9402
3 rd Vice President (Tournament Director)	Kristen Lieurance kristenL66@cox.net	830-2064
4 th Vice President (Blitz President)	Brian Horton bhorton146@aol.com	254-6976
5 th Vice President (U5/6 coordinator)	Barney James bjdown2@aol.com	496-7728
6 th Vice President (U8 coordinator)	Dave McFarland dsmcfarland@cox.net	409-6941
7 th Vice President (U10 Coordinator)	David Perryman dancperryman@gmail.com	508-8336
8 th Vice President (U12-19 Coordinator)	Jake Dollarhide jakedollarhide@ibamc.com	
Secretary	Katherine Mitchell mkcmitch@sbcglobal.net	296-0023
Treasurer	Brian Parris brianparris@cox.net	355-2969
Registrar	Melissa Pearson (U5 – U8) PearsMe@tulsaschools.org Amanda Haas (U9 – U12) ajhaas13@alumni.nsuok.edu	949-8413 607-0706
Game scheduler	Robin Colby rcolby@frontiernet.net	694-4160
Office Manager	Tim Faux tusc@tulsaunitedsoccerclub.com	665-2870
Head Coach	Wilber Maximore doc@blitzunited.org	298-5976
Competitive Commssnr	Page Keck page@keck.com	830-5800
Referee Assignor	John Evans acesoccer@cox.net	747-7151
Area Referee	Ron Poulsen ron@oksoccer.com	521-6286

General Information for Recreational Coaches

The most important task in coaching is the training of young people to play a sport as members of a team in a sportsman-like manner.

Field Set Up. The fields will be marked by the club prior to all games. Nets will stay in place during the season. Please do not take down the nets after your game. **The home team of the first game each week on each field will be responsible for putting out the corner flags only. The last game played will be responsible for taking the flags down.** Combination to the locks on both gates and the equipment trailer is **2870**. Please do not give this number out.

Game Check In. Each coach must present a current game form/roster to the referee before the start of the game. U16-U19 players must also have player passes checked by referees.

START GAMES ON TIME. Have players at the field 20 minutes before game time so that they can be checked in by the ref and be ready to play at game time. A team is allowed only 15 minutes from the scheduled game time to field a team. After that, the referee will turn in game forms to Green Country or Tulsa United to determine a forfeit or not. **Start your games on time.**

Game Forms. Each coach will be required to bring a game form to the fields for each game. Game forms will be available from gotsoccer.com. Referees will not start games without the game form.

Coaches must put jersey numbers for each player on the game form. Please go into your GotSoccer Team Page and add jersey numbers before the start of the season. Referees will check numbers with players prior to the game.

The **winning coach** for all games **U9 - U19** must turn in game forms after each game. These forms should be signed by both coaches and the referee crew. Please make sure that the form is **dated** and has the **correct score** on it. **PLEASE CHECK THAT THE SCORE IS CORRECT AND LEGIBLE.**

Forms for **U14 - U19** games should be sent or given to your league commissioner. You will be given a list of your league commissioners. You must turn in these forms within seven days of each game. Please don't delay with this as it creates havoc near the end of the season trying to figure out what the standings are. If you are the winning coach, send them in right after the game.

Game forms for **U7 - U12** teams should be signed and turned in to the coach box in the equipment trailer. Please make sure we can all read the scores and dates. **U7-U8** do not record the scores.

U5 & U6 teams should bring a copy of their roster to each game. They do not need to be signed. No score will be recorded.

ONLY ROSTERED PLAYERS WILL BE ALLOWED TO PLAY. NO EXCEPTIONS.

Bad Weather. If the weather is questionable the night before a game day or the day of a game, call the office number (**665-2870**) to find out if the games are on or not. The Tulsa United website also has a "Game Status" button on the homepage. Coaches and parents can check this as well to find out if games have been cancelled on any day. The answering machine and the website will be posted by 7:00 AM Saturday morning. If the answering machine announcement has not been changed, then all games are still being played. **You may also sign up with our automated game status system and have a message sent to your email or cell phone. Go to www.statusme.com and sign up under Tulsa United Soccer.** ALSO, please make sure, if you are playing a visiting team from another club, that you call that coach and tell him/her that the games have been cancelled on our fields. Also, if you are playing at another club on a bad weather day make sure that you call the home coach to see if they are playing. Sometimes our fields are not playable while others are. Don't assume that all games in the area are cancelled because ours are. REMEMBER ALSO: We play soccer in the rain and the cold!

Bad weather cancelled games need to be made up as soon as possible. Email the game scheduler as soon as possible after a missed game to reschedule your game. **DO NOT** wait until the end of the season.

Rescheduling Games. Tulsa United's policy is to only approve rescheduling due to weather or tournament play for either team. Games will not be rescheduled for player or coach convenience. We have all made a commitment to play every Saturday during the season so we need to make every effort to accommodate that commitment. Games may be rescheduled only if both coaches agree to change the originally scheduled game. Home coach must email the scheduler to request a change. This **must** be done by **Wednesday (6:00 PM)** before a Saturday or Sunday game otherwise the home team will forfeit its referees and will have to pay for refs out of pocket when the game is made up. Coaches must also call or email their league commissioner to let them know that the game has been changed. Please be reminded that each season we have to deal with the time change and that limits how many games we can make up in the evening during the week. Rescheduled games should be played within 10 days of the original game date when possible. If you are the home coach and you have tried to reschedule with the opposing coach and he/she is unresponsive call your league commissioner for assistance.

Practice Fields. There is no practice allowed on the game fields...ever. Each team is allowed one scrimmage game during the season as long as it is scheduled through the scheduler. Each coach is responsible for finding a place to practice. No practice is allowed on the game fields.

No Tolerance Policy. No Sideline Rage Allowed! Tulsa United supports the US Youth Soccer Association, the Oklahoma Soccer Association and the Green Country Soccer Association in their guidelines that discourage negative behavior from coaches, players and spectators at games and practices. Tulsa United has a no tolerance policy that does not allow for any negative yelling or actions directed toward players and/or officials. Referees may send off players or coaches or may terminate games if such behavior is seen. Please remind your players and parents, as well as yourself, to be positive role models. Help set high standards for sportsmanship by encouraging moral and social integrity on the field. Avoid sideline rage!

Registered Players. Only registered players are allowed to play in games and participate in practices. Only registered players are covered by insurance. Liability insurance for coaches does not cover activity with non-registered persons. Registered players are listed on the official Green Country Soccer Association Recreational Roster and the Tulsa United Game Form given to each coach by the club registrar. Officially registered players are listed and approved by GCSA and dated on the roster. Coaches cannot add players to teams.

Rosters. Coaches should check their rosters carefully at the beginning of each season. If there are names and/or phone numbers that are incorrect please call the office and leave a message with the correct information so that it can be changed in the computer. Coaches should get in touch with players as soon as they receive their rosters so that practices can begin. **Make sure that you have a copy of your roster/game form with you at each game during the season.**

Player Passes. Coaches of U16 - U19 teams must have player passes filled out for each player before they will be allowed to play. Player passes will be given out with rosters. Coaches need to get players to sign, *in cursive*, the same name that is listed on the roster. If they sign a nickname, it will not be accepted by Green Country. Small color pictures must accompany the pass for each player. Do not wait to do this.

Staff Registration. All coaches and referees must be registered with the Oklahoma Soccer Association before the season starts. Background checks of all coaches, assistant coaches and managers must be submitted through the club before the season begins. Each coach should read and become familiar with the TUSC and GCSA rules and regulations.

Playing Time. All recreational players must be allowed to play at least half of each game. [The only exception to this rule may occur in the event that a player failed to appear for scheduled practices or was guilty of unsporting behavior or violent conduct during the preceding week. Disciplinary procedures must be explained to all players and parents at the beginning of the season. Any disciplinary action that denies the player the right to play must be explained to the player, reported to the league commissioner and noted on the game form prior to the start of the game.]

Team Activity Time. Team activities, including games and practices, are restricted to 3 per week (except U16 and U19), not to exceed 90 minutes each in duration.

Trophies and Awards. Trophies and medals are awarded to 1st and 2nd place teams in each league (U9 - U19). Trophies are awarded to all U5 - U8 players each season.

Proper Uniform and Equipment. Make sure that your team is ready to be checked in by the referee 15 minutes before game time. This would include all players wearing proper uniform (with number showing on jersey), proper shin guards and shoes. The referee will check to make sure that shin guards cover the leg properly, not just halfway. **Soccer socks must be worn over the shin guards.** Coaches are encouraged to have an extra pair of socks with them at all games just in case.

- Players are not allowed to wear any items that might be considered dangerous to themselves or other players. This includes rings, watches, bracelets, earrings, necklaces, etc. No metal cleats or toe-cleats are allowed.
- Uniform T-shirts are provided by the club for all U5 & U6 players. Uniforms for all other age groups are the responsibility of the individual teams. Coaches can call the office for information about ordering uniforms in town or by catalog.
- Home team is responsible for differentiating jersey colors if both teams are wearing the same color. Goalkeeper jerseys should not be same color as either team jersey color.

Substitutions and Halftime. U5 – U12 teams will have free substitutions at any stoppage of play after the referee has signaled for entry. U14 – U19 substitutions will be made in accordance with FIFA Laws of the Game. We will no longer substitute at the quarters. Substitutions should be made quickly after the referee has signaled for entry. Each coach will be responsible for playing each player at least half of each game. Halftime for all teams will be 5 - 10 minutes at the referee's discretion.

Field Conduct for Coaches and Parents. No one is allowed behind the goals during games and all spectators are to be at least one yard off the touchline. Coaches and/or Assistant Coaches are not allowed on the field during the game or at substitution time without permission from the referee (except U5 & 6). *Spectators are not allowed on the field at any time.*

Proper conduct is a must for players, parents and coaches. The coach will set the example for all others to follow. Coaches are responsible for players' and parents' actions and behaviors. Coaches should encourage players to be aggressive, but emphasize they are to "go for the ball" not another player. Good coaches never argue with referees or yell negative criticism at players. Always congratulate the other team after each game, win or lose.

The HOME side of the field will be either the East or South side depending on the direction of the field. AWAY side will be the West or North side. Each team's coaches, players and parents will be located on the same side of the field during the game. The home team is responsible for providing the game ball and differentiating jersey color.

Coaches Code of Conduct.

- I will place the safety, emotional and physical well-being of my players ahead of a personal desire to win.
- I will treat each player as an individual remembering the large range of emotional and physical development for the same age group.
- I will promise to review and practice the basic first aid principles needed to treat injuries to my players.
- I will do my best to participate in coaching clinics to advance my coaching skills.
- I will do my best to organize practices that are fun and challenging for all my players.
- I will ensure that my players' soccer experience is one of fun and enjoyment. I will be generous with my praise when it is deserved. I will never yell at or ridicule my players for making mistakes or losing a game.
- I will respect the referee's decisions at all times.
- I will encourage everyone to use our facilities properly and to help keep the fields clean and free of litter.
- I will be knowledgeable in the laws of soccer and teach these laws to my players.
- I will remember that I am a *youth sports coach*, and that the game is for the players, not the adults.
- I will abide by the decisions of the TUSC Disciplinary Committee.

Closing the Fields. It is the responsibility of the coach of the last TUSC team playing on the fields to close the Equipment Trailer and both gates to the complex. The combination for the locks is the same for all three. Make sure that you turn the numbers on the lock to keep it locked, otherwise it will not lock. To open the locks, set the combination, push up and then pull down.

Financial Assistance. Limited financial assistance is available upon application with the club. Assistance is generally awarded in exchange for volunteer hours worked for the club. Forms are available at the office.

Brian Colby Memorial Scholarship. Each year in May, Tulsa United awards a \$500 scholarship to a high school senior playing with our club. To be eligible, a player must be on a Tulsa United team, be a high school senior, have played 6 seasons for Tulsa United and plan to attend an accredited 2 year or 4 year college or university. Applications are available at the TUSC office.

Annual Chillfest Tournament. This is our annual fall recreational tournament. Teams from all over the area compete. This year it will be held October 14, 15 & 16 at the Tulsa United fields. Be sure to enter your team.

MISSING CHILD / EMERGENCY PROCEDURES

Upon initial notice of a missing child:

- Immediately close all gates to complex.
- Sound air horn with 5 long blasts. Coaches and officials will be told in pre-season meetings to suspend play and initiate a search at this signal.
- Suspend play on all fields.
- Send volunteers/coaches to pedestrian access locations (south and west sides of complex). Allow no one to exit or enter complex in a car or on foot.
- Obtain detailed description of missing child – name, sex, clothing, height, weight and last location.
- CALL 911
- Use referees and coaches to search entire complex including trailers and sheds and port-a-johns as well as all parked cars.
- Sound all clear with 1 long blast on air horn when child is found.

3 V 3 - Under 5 Player Development Program

The Under 5 Player Development Program has been designed to offer individual skill development for the 4 year old player. It will also provide a “team” experience played out in 3 V 3 mini-games. There will be a 30 minute training session for the group, a 10 minute break, followed by a 30 minute game. Parents and parent coaches will be encouraged to participate. The sessions will be held each Saturday at the Tulsa United fields. There will be no make up sessions.

Team t-shirts will be provided by the club for each U5 player. Winning will not be emphasized. The program will be instructed by Blitz United trainers and will encourage player development rather than league play. Parent coaches will receive training as well to carry through to the Under 6 program.

3 V 3 – Under 5/6 Guidelines

- Size 3 ball is used.
- Maximum number of players on the field for each team is 3. These players are all field players. There is no goalkeeper. All players must play at least ½ of each game. Teams may be made up of girls and boys.
- Substitutions may be made at any stoppage of play after the referee gives permission to enter the field. Each game will be divided into **two 20-minute halves**. There will be a 5-minute half time.
- Parents/Coaches will referee each game, giving instruction during the game.
- There will be no off-side infractions.
- All fouls will result in an indirect free kick with the opponents 3 yards away. Any goals resulting from an indirect free kick must be touched or played by a second player of either team.
- There will be no penalty kicks.
- A throw-in will be used if the ball goes out of touch on the sidelines. If a throw-in is used, a second throw-in must be allowed if the player commits a foul on the initial attempt.
- A goal may not be scored on a kick-off.

Special Instructions for U6 Games.

Both teams should be checked in together with both coaches present before the start of the game. Have players shake hands and tell them to be good sports and to have fun! Check shin guards and jewelry.

There should be only one coach from each team on the field during the game. Each coach should keep time for half the game. Substitutions can be made at any stoppage of play after the referee gives permission to enter the field. Use common sense in substitutions. Sick and/or crying players can be substituted at any time. The idea is to have fun.

Coaches are reminded that their presence on the field during the game is for instructional purposes (i.e. to help when the ball goes out of bounds). There will be no tolerance for bad sportsmanship by players, parents or coaches. Players who demonstrate unsporting behavior by words or actions may be asked to leave the field by either coach. Coaches should not allow any such behavior or exhibit it themselves. Just because there are no referees does not mean that the rules should not be obeyed. Unsporting behavior is not tolerated at any level of play and will not be allowed to start with the under 6 group.

4 V 4 – Under 7/8 Guidelines

- Size 3 ball is used.
- Maximum number of players on the field for each team is 4. These players are all field players. There is no goalkeeper. All players must play at least ½ of each game.
- Game forms should be signed by each coach and the referee before being turned in. No score shall be recorded.
- Substitutions may be made at any stoppage of play after the referee gives permission to enter the field. Each game will be divided into **two 24 -minute halves**. There will be a 5-minute half time.
- There will be no off-side infractions.
- All fouls will result in an indirect free kick with the opponents 5 yards away. No kicks will be taken by the attacking team within the defending team's goal box. There will be no penalty kicks.
- A throw-in will be used if the ball goes out of touch on the sidelines. If a throw-in is used, a second throw-in must be allowed if the player commits a foul on the initial attempt.
- **A goal may be scored on a kick-off.**
- Opponents must be 5 yards away from the ball at the taking of all free kicks.

6 V 6 Girls - 7 V 7 Boys – Under 9/10 Guidelines

- U9 and U10 girls will play 6 V 6.
- U9 and U10 boys will play 7 V 7.
- Size 4 ball is used.
- Maximum number of players on the field for each team is 6 including the goalkeeper. All players must play at least ½ of each game.
- Game forms should be signed by each coach and the referee and the score noted before being turned in.
- Substitutions may be made at any stoppage of play after the referee gives permission to enter the field. The game will be divided into **two 25 minute halves**.
- There will be no off-side infractions for the U9 & U10 groups.
- Free kicks and throw-ins shall conform to FIFA laws.
- A goal may be scored on a kick-off.
- Opponents must be 8 yards away from the ball at the taking of all free kicks. Penalty kicks will be used for infractions within the penalty area by the defending team.